



DINITROL® 1 Litre Can - D.I.Y. Treatment Guide

The treatment application is ideal for protecting old or new large passenger cars and 4x4 off road vehicles*



To apply 1 Litre schutz can products you will require access to a compressor or suitable air supply.

Please note: Whilst applying DINITROL rustproofing products yourself with a D.I.Y. treatment kit will provide suitable protection, it can be difficult to achieve the same level of protection that is applied by a professional treatment provider. *The D.I.Y. treatment process described in this document is suitable for new and older passenger cars or 4x4 off road vehicles that are driven in normal circumstances and roads (not off road).

Tools: Optional Extras Check List

To achieve the best results when applying the rustproofing treatment products you will ideally require the following items listed below. You will also require an air compressor the 1 litre schutz cans kit is designed for those who have access to an air supply.



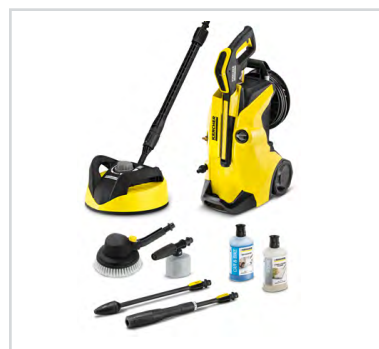
Micron gauge

The tool is perfect for measuring that the correct thickness has been applied with vehicle underbody chassis coatings.



Air Compressor

We have an extensive range of Clarke air compressors to suit all budgets and you can also purchase diesel paraffin heaters.



Steam Cleaner

You must remove all dirt & residue from the chassis before treating. We have a wide range of Kärcher steam cleaners for sale.



Masking Kit

We have specially designed DINITROL treatment Q1 kit bundles including drop film & tape to fully mask the vehicle before application.



Personal Protection Kit

Our kits contain overalls, breathing masks, eye protection and gloves to ensure you are adequately protected when applying the treatments.



Underbody Spray Tool with Lance

Compatible with one litre schutz cans by simply screwing onto the can neck. The lance extension is perfect for cavity wax injection applications.



Humidity Gauge

After steam cleaning the underbody chassis it's essential you ensure the surface is completely dry to prevent moisture becoming trapped.



White Spirit

After each treatment you will require approximately 2 litres of white spirit to clean the spray tool to ensure future usage.



Wire Brush

You must remove all soil & dirt including any visible rust by using a wire brush prior to steam cleaning the underbody chassis & wheel arches.

Please note: You will also ideally require suitable ramps to lift and raise the vehicle so you can safely gain access underneath to the underbody chassis area



Method: Underbody Chassis Coating

- 1 Lift the car with a suitable ramp to access the underbody area safely.
- 2 Remove all wheels from the vehicle.
- 3 You must now mask the brakes and exhaust.
- 4 No remove all plastic trim covers from the vehicle including any sound deadening pads.
- 5 Steam clean thoroughly, especially the chassis area & wheel arches.
- 6 Leave to completely dry this will avoid moisture becoming trapped.
- 7 If corrosion is evident, you must apply fine mists with DINITROL® RC900 a rust converter.
- 8 Leave until completely dry and the treated corrosion area appears saturated black.
- 9 Now apply DINITROL® 1000 into all underbody cavities.
- 10 Apply a fine 40 Micron primer layer of DINITROL® 1000 to the underbody. Leave to dry.
- 11 Apply a 700 Micron coating of DINITROL® 4941 to the underbody by gradually building up.
- 12 Once fully dry and completely coated you can now re-instate all plastic covers.
- 13 You can now re-install the wheels. Remember to make sure they are tightly secured.



Method: Upper Cavities & Engine Compartment

- 1 Disassemble and remove all protective covers or fittings to gain access to all cavities.
- 2 Inject generous amounts of DINITROL® 1000 into all cavities. (*See optional Spray Diagram*)
- 3 Apply DINITROL® 1000 into all cavities within and surrounding the engine compartment.
- 4 Now apply DINITROL® 1000 into all areas underneath the windscreen wipers.



DINITROL® Corroheat 4010 specialist engine preservation corrosion protection product.

The product is specifically designed for engine compartments and creates a hard, transparent film that is resistant to both alkaline and acids. Whilst providing heat resistant up to a temperature of more than 200°C . The adhesion and flexibility properties on rubber and plastic parts are also very good at both low and high temperatures.



Shopping List: Underbody Chassis Coating (only)

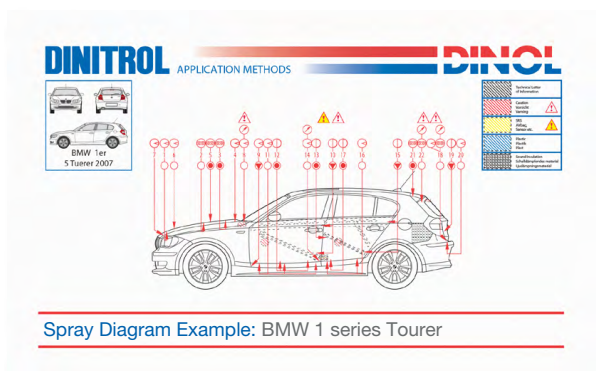
Below is a recommended estimation guide for product usage when treating a 4x4 vehicle or large family saloon car.

Item Description	Quantity	Checklist ✓
Masking Tape Roles (24mm & 48mm wide rolls available)	2	
Masking Drop Tape (Large & small available)	1	
DINITROL® 1000 (1 Litre schutz can)	2	
DINITROL® 4941 (1 Litre schutz can)	10	
DINITROL® Auto Cleaner 7225 - Ideal for removing over-spray (100ml bottle)	2	
DINITROL® RC900 Rust Converter (400ml aerosol)	3	

Shopping List: Upper Cavities & Engine Compartment (only)

Below is a recommended estimation guide for product usage when treating a 4x4 vehicle or large family saloon car.

Item Description	Quantity	Checklist ✓
DINITROL® 1000 (1 Litre schutz can)	3	
DINITROL® Corroheat 4010 (1 Litre schutz can or 500ml aerosol)	1	
DINITROL® Auto Cleaner 7225 - Ideal for removing over-spray (100ml bottle)	2	



Optional Extra: DINITROL® Spray Diagrams

To achieve the best results when applying cavity waxes, and vehicle underbody chassis coatings. We recommend you purchase a DINITROL spray diagram that has been created for all individual models in major vehicle manufacturer ranges. The spray diagram is unique to your vehicle and provides detailed access location points to apply cavity waxes safely without damaging safety sensors that could prove fatal in the event of an accident.

How we rust proof a vehicle: Step by Step Guide

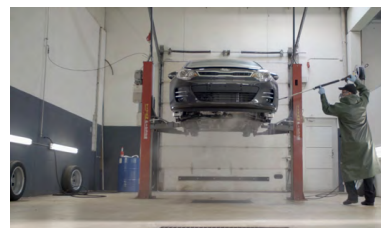
Below is a typical step by step example guide of the application process in Scandinavian DINITROL® Treatment Centres when rustproofing a vehicle. If you would like the treatment application professionally applied. Why not use our local Treatment Provider Finder search tool available online via the www.dinitroldirect.com website.



1. Remove all plastic parts



2. Store plastics in a safe place



3. Steam Clean the vehicle



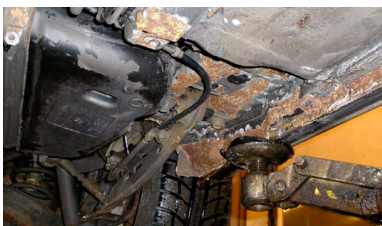
4. Make sure the chassis is clean



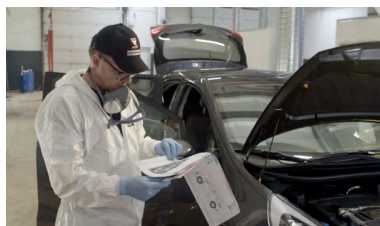
5. The vehicle must be completely dry



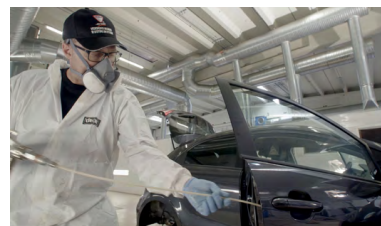
6. Inspect the chassis area



7. Remove & treat any rust



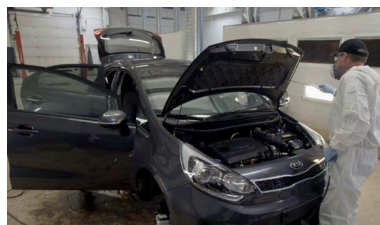
8. Follow the spray diagram



9. Start to inject the cavity wax



10. Apply into access points



11. Protect the engine compartment



12. Prime the underbody chassis



13. Apply underbody coating



14. Build-up by layering the coating



15. Fully coat wheel arches



On our official www.DinitrolDirect.com website and **YouTube** Channel "DINITROL UK" you will find many video tutorials and application guides including expert tips in relation to processes, tools, equipment and cleaning.

For more information call: **01925 241 250** or email: sales@DinitrolDirect.com